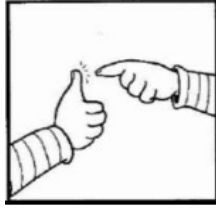


### Phonics

This week we are going to focus on the 'ou' digraph



Watch today's Phonics lesson on YouTube - you will need a pencil and paper.

[https://www.youtube.com/channel/UC3k\\_zCcbN3cox3NuT625w1g/](https://www.youtube.com/channel/UC3k_zCcbN3cox3NuT625w1g/)

Play Phase 4 Buried Treasure on Phonics Play. Please select 'Polysyllabic words'.



St Jude & St Paul's  
Church of England Primary School

Reception Home  
Learning

Wednesday 17<sup>th</sup> June

### Maths

This week, we will be learning about time.

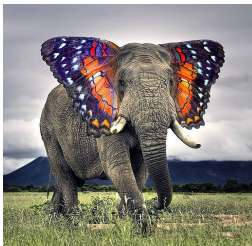
<https://www.youtube.com/watch?v=mxXvV2ww9Xs>

In one minute, how many of each of these can you do? Please make a chart to record your results...

Exercise	How many?
Star jumps	
Press ups	
Ball headers	
Throw and catch ball	
Hop on one leg	

### Creative

Can you create your own animal?



What would you name it? What instructions would you give to people on how to look after it? Why is it important that your animal is looked after carefully?

### Physical



This week, we are practising mindfulness. Select one of these great videos each day and take some time to chill out and relax.

<https://www.youtube.com/playlist?list=PL8snGkhBF7nj00QvtE97AJFL3xZYQSGh5>

### RE

This term, we are thinking about our amazing planet and how Christians believe that God created the Earth, and all of the living things on it.

<https://www.youtube.com/watch?v=I9GsKFIaRo0>

Talk to an adult:

- Do you have a pet?
- How many different types of animals can you think of?
- Do you know what extinct means?
- How do you think God feels when animals become extinct?



If you have any questions or anything you'd like to share with me, please email me: [admin@sjsp.islington.sch.uk](mailto:admin@sjsp.islington.sch.uk)